

Gender aspects of *Prosopis juliflora* spread perceptions, impacts and coping strategies



University of Bonn
Department of Geography
Helena Inkermann



Regional Conference on Managing *Prosopis Juliflora*
for better (agro-)pastoral Livelihoods in the horn of Africa
01st and 02nd of April

Outline



2

1. Introduction
2. Key Findings
 - a. Perceptions
 - b. Impacts
 - c. Coping Strategies
3. Conclusions
4. Recommendations

- Gender relations influence the use and management of the environment
- Women play an important role as social actors
- Strict gender roles in a pastoralist society
 - Work tasks and work load
 - Power relations
 - Decision making
 - Access to resources
- Focus of the case study → Gender sensitive perceptions, impacts and coping strategies

Study site

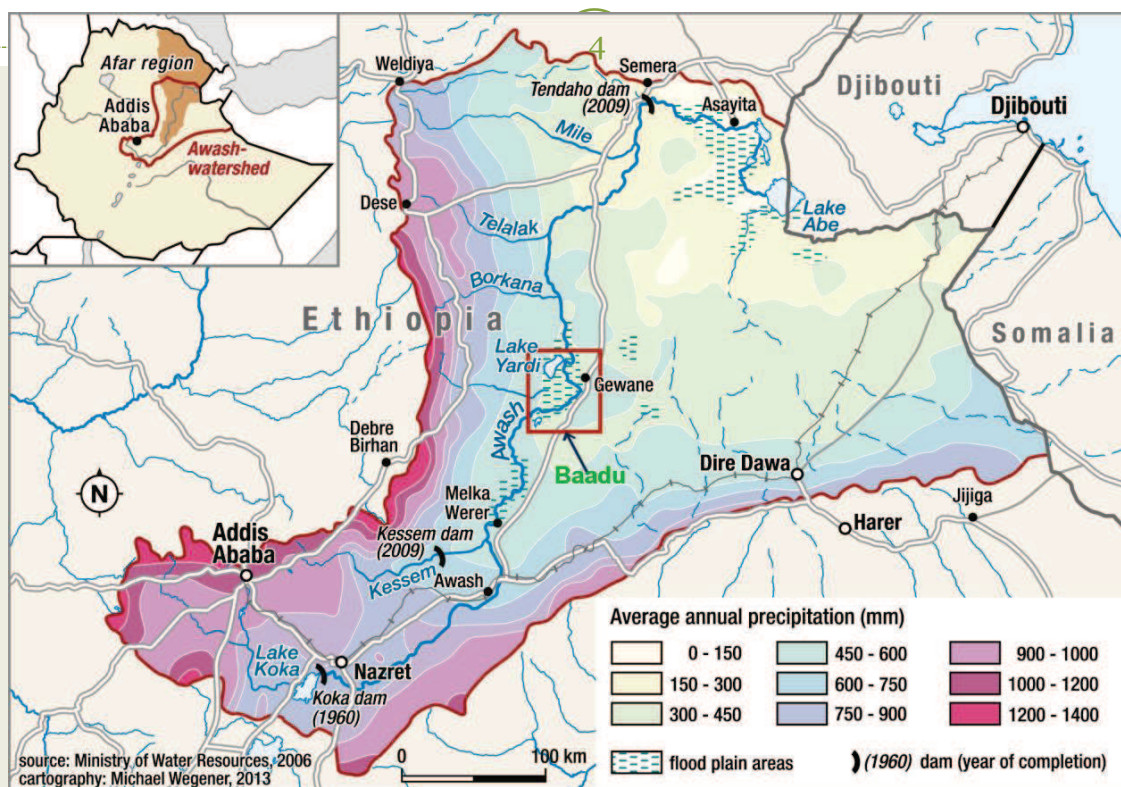


Figure 1: Location of Baadu case study site (AYANUW ET AL.)

Key Findings – Perceptions

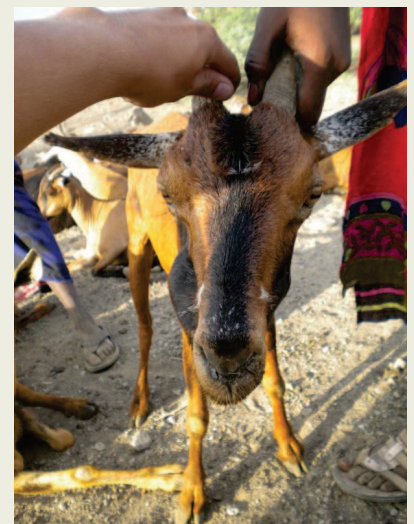
5

- *Curse of Allah*
- *P. juliflora* responsible for decreasing herd sizes
- Problem ranking differs between men, women, and areas
- “Tiredness” of talking about *P. juliflora* invasion
- “The black gold”
- Perceived as threat to livestock and food security

Key Findings – Impacts

6

- “Woyane Hara doesn’t discriminate!”
- Decreasing dry season grazing areas → less livestock → food insecurity
- Men focus on livestock, women include dimension of household needs
- Mobility patterns are influenced
- Pastoralists particular vulnerable



Key Findings – Coping strategies



7



Key Findings – Coping strategies

8



- Men and women perceive invasion mainly in the same way
- “Woyane Hara doesn’t discriminate.” (local perception) → from a research perspective impact on women and men differs
- Distinction needs to be made between rural and more urban areas
- Coping strategies → threat *and* potential for women → increased vulnerability *vs.* changing power relations
- Women cannot be seen as one homogeneous group

- Administrative responsibilities need to be clarified → women representatives need to be included
- Learn from experiences of others → e.g. Rohi Wadu
- Land use plan → identify sites that can be used for clearing
- Focus on pastoralists → pastoralist women especially vulnerable

Thank you for your attention!

